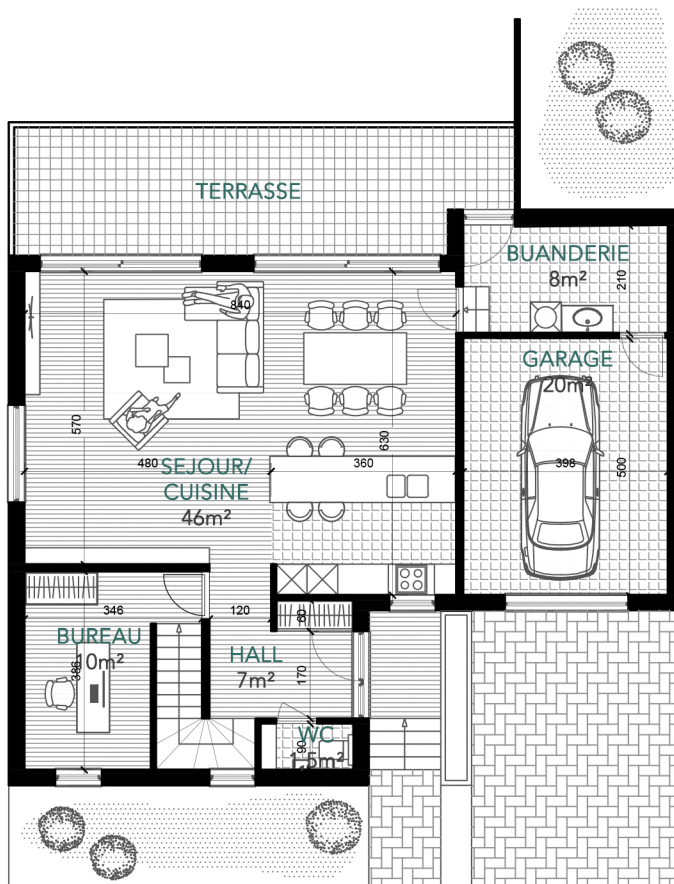


# PRÉ A LA PLANCHE

PETIT-ROULX-LEZ-NIVELLES



## MAISON 11

3 chambres

1 bureau

Superficie totale brute : 230 m<sup>2</sup>

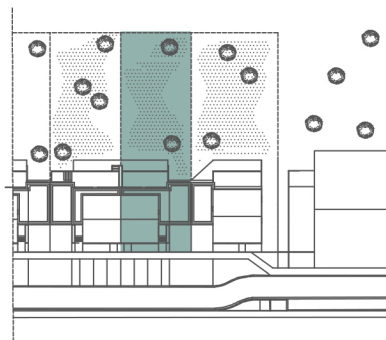
Surface nette habitable : 154 m<sup>2</sup>

Grenier (>1,5m) : 15 m<sup>2</sup>

Garage : 20 m<sup>2</sup>

Terrasse : 25 m<sup>2</sup>

Terrain : 5,68 ares



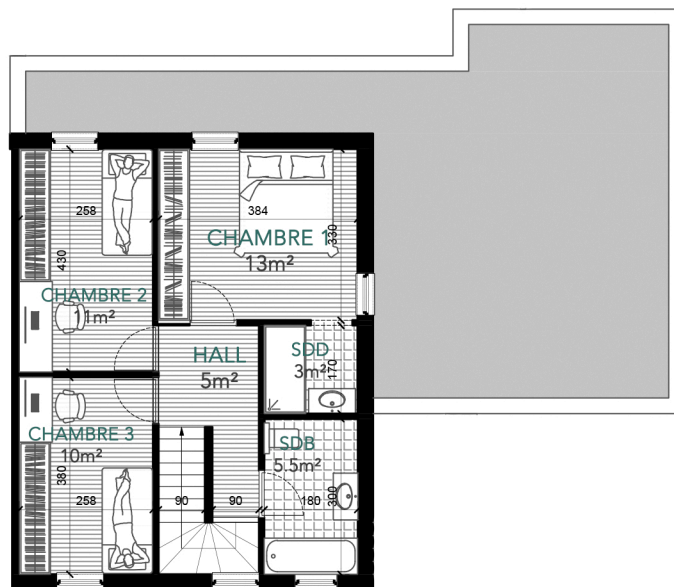
IMPLANTATION



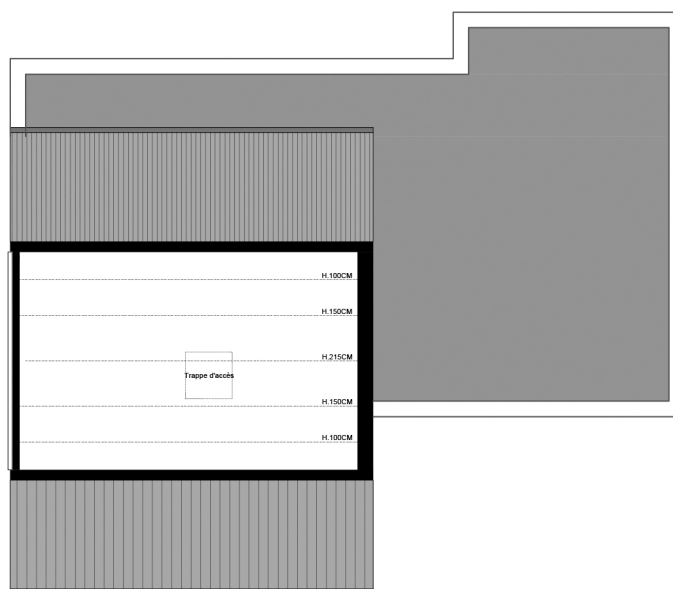
FACADE  
NOUVELLE VOIRIE

# PRÉ A LA PLANCHE

PETIT - ROULX - LEZ - NIVELLES



1ER ETAGE



GRENIER